



# User Manual

Model: H6079  
Govee RGBICWW Floor Lamp Pro



## Safety Instructions

Read and follow the safety instructions below:

- Use the product with the provided power adapter only.
- The product is not waterproof. Do not expose it to areas susceptible to water splashes or water drops.
- The internal light sources cannot be replaced. If it breaks, the product should be replaced.
- Do not allow children to install the floor lamp alone.
- Do not disassemble or modify the device and its accessories.
- Avoid installing the device near potentially dangerous sources or heat sources (e.g., candles, liquid-filled objects.)
- The working temperature should be between 14 to 104°F (-10 to 40°C).
- Store the product in places where the temperature is within -4 to 140°F (-20 to 60°C) if you do not plan to use it for a long time.

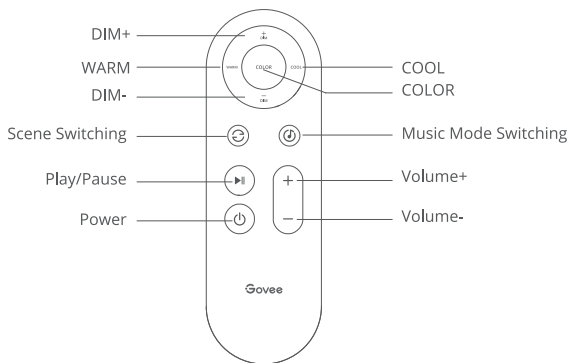
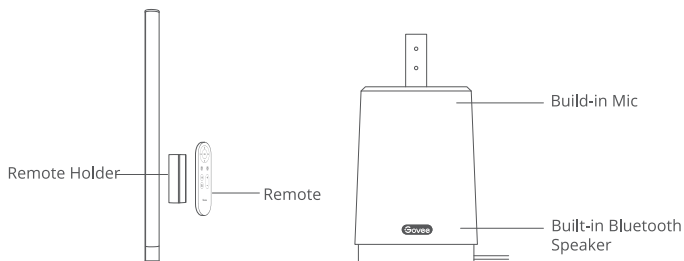
## Introduction

Thank you for choosing Govee RGBICWW Floor Lamp Pro! This product is suitable for the living room, bedroom, home office, etc., providing you with high illuminance and colorful ambient lighting. The Floor Lamp Pro has updated RGBIC lighting effects and a built-in Bluetooth speaker, making the interconnection between white noises and lighting possible, bringing you a fantastic immersive experience.

## What You Get

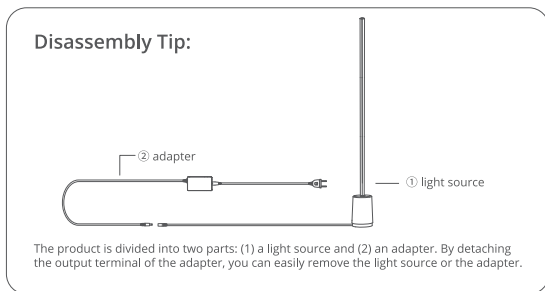
Item	Quantity
Floor Lamp	1
Power Adapter	1
Remote	1
Remote Holder	1
Quick Start Guide	1
User Manual	1

## At a Glance



Buttons	Instructions
DIM+	Press to increase the brightness of the light.
DIM-	Press to decrease the brightness of the light.
WARM	Press to turn the light warm.
COOL	Press to turn the light cool.

<b>COLOR</b>	Press to change colors. Tips: Enter the Device Settings page in Govee Home App. Click "Preset Features" to manage the colors.
<b>Scene Switching</b>	Press to change the scene. Tips: Enter the Device Settings page in Govee Home App. Click "Preset Features" to manage the scenes.
<b>Music Mode Switching</b>	Press to change the music mode.
<b>Volume+</b>	Press to increase the volume.
<b>Volume-</b>	Press to decrease the volume.
<b>Power</b>	Press to turn off the light and the white noise. Tips: The sound will not be turned on automatically by default when you turn on the device. If you want to adjust it, you can go to the Device Settings page to turn the "Silent Power-Up" switch off.



## Pairing Your Device with Govee Home App

### What You Need:

- A Wi-Fi router supporting the 2.4GHz and 802.11b/g/n bands. 5GHz is not supported.
- ① Download Govee Home App from the App Store (iOS) or Google Play (Android). Log in with your account (new users need to create an account).
- ② Turn on the Bluetooth on your smartphone.

- 3 Open the app, tap the “+” icon in the top right corner and search for “H6079”.
- 4 Tap the device icon and follow the on-screen instructions to complete pairing.



## Pairing with the Bluetooth Speaker

- 1 Turn on the Bluetooth on your smartphone.
- 2 Long press the “▶||” button on the remote or enable Bluetooth Pairing in the Device Settings page in Govee Home App to allow the floor lamp to enter the Bluetooth speaker pairing mode. The device will flash blue and start to play the pairing sound.
- 3 Find Govee Floor Lamp\_xxxx in the list of Bluetooth devices on your phone and tap it. The pairing succeeded if the green light appears and the red light indicates the pairing failed. If the pairing failed, please try again.
- 4 You can check the Bluetooth speaker connection in the list of Bluetooth connections on your phone or in the Device Settings page in Govee Home App.

Tips: You can turn the pairing sound and lighting effect on or off in Settings-Bluetooth Speaker.

## Specifications

Model	H6079
Adapter Input	AC 100-240V
Lamp Input	12VDC 5A
Light Displaying Technology	RGBIC
Color	RGBWW
Control Methods	Govee Home, Remote Control, Voice Control
Working Temperature	14 to 104°F (-10 to 40°C).

# Troubleshooting

## ❶ Cannot connect to Govee Home App.

- Check if the lamp has been powered on.
- Check if your smartphone's Bluetooth has been turned on or try connecting the lamp to another smartphone.
- Ensure that your smartphone is near the lamp when connecting for the first time.
- If the problem persists, go to the "Device" page to delete the device and follow the previous instructions to reconnect.

## ❷ Cannot connect to Wi-Fi.

- Check if the lamp has been powered on.
- Do not skip connecting to Wi-Fi during the pairing process.
- Ensure that your Wi-Fi router is 2.4GHz capable (5GHz is not supported).
- Ensure that you entered the correct Wi-Fi password during the Wi-Fi connection process.
- Shorten the distance between the device and the Wi-Fi router to less than 50ft, then try reconnecting.
- Use another smartphone to pair with the device to check if your Wi-Fi network is working.

## ❸ Cannot pair or connect with Alexa or Google Assistant.

- Ensure that the Wi-Fi connection is stable.
- Go to the app's Settings page and follow the instructions under "User Guide" to pair the device again.

This product contains a light source of energy efficiency class G.  
Colour - tuneable light sources that can be set to at least the colours listed in this point and which have for each of these colours, measured at the dominant wavelength, a minimum excitation purity of:

Blue	466.5nm	96.1%
Green	524.0nm	76.9%
Red	625.0nm	100.0%

and are intended for use in applications requiring high-quality coloured light.

## Customer Service

 Warranty: 12-Month Limited Warranty

 Support: Lifetime Technical Support

 Email: [support@govee.com](mailto:support@govee.com)

 Official Website: [www.govee.com](http://www.govee.com)

 @Govee  @govee\_official  @govee.official

 @Goveeofficial  @Govee.smarthome



Govee Home App

For FAQs and more information,  
please visit: [www.govee.com](http://www.govee.com)