



User Manual

Model: H6178

RGB LED TV Backlight

Safety Instructions

Read and follow all the safety instructions:

- The product is not water resistant, be cautious when installing and using.
- Use the product with the provided power adapter only.
- Be cautious of static electricity during installation and usage. Keep the product away from sharp objects or strong corrosive chemicals.
- When bending the strip lights during installation, avoid folding the LED components as it may affect the product's life span.
- Remove nails, metal, or other conductive objects from the installation surface before attaching the strip light, as it may cause short-circuiting.
- Do not install the strip light near any heat sources.
- Do not allow children to install the strip light alone.
- Avoid installing the strip light near potentially dangerous sources (e.g., candles, liquid-filled objects).
- Unroll the strip lights before powering them on.

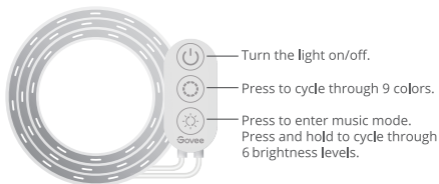
Introduction

Thanks for choosing the Govee RGB LED TV Backlights. This TV backlight is equipped with a 3m-length strip light. It is powered by a USB power supply port and supports app control.

What You Get

LED Strip Lights	1
User Manual	1
Service Card	1

At a Glance



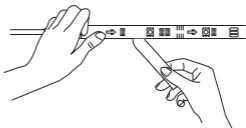
Installing Your Device

Before You Install

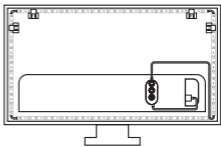
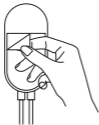
- 1 Unpack the box and check all items listed in the packing list.
- 2 Power on the strip light and check whether it lights up.

Installing Steps

- 1 Wipe the surface to make sure it's clean and dry.
- 2 Peel off the protective film on the tape, stick the strip on and press over it firmly.



- 3 Peel off the protective film on the control box and stick it on. Place the control box close to the music source to achieve the best music effect.
- 4 Power on the strip lights and start using.



Pairing Your Device with the Govee Home App

Pairing Instructions

- 1 Download the Govee Home app from the App Store (iOS devices) or Google Play (Android devices).
- 2 Turn on Bluetooth on your smartphone.
- 3 Open the app, tap the “+” icon in the top right corner and search for “H6178”.
- 4 Tap the device icon and follow the on-screen instructions to complete pairing.



Specifications

Length	2 X 50cm + 2 X 100cm/ 2 X 1.64ft + 2 X 3.28ft
Light Color	RGB
Water Resistance	NO
Control Method	App, Control Box
Power Supply	USB 5V

Troubleshooting

- 1 The strip light flickers or the light is not bright enough.
 - Plug out the USB port and re-plug it in.
 - Power on the strip lights with a 5V USB adapter. (Notice: The adapter is NOT included).
- 2 The adhesive tape is not strong enough.
 - Make sure the installation surface is clean and dry.
 - Firmly press over the strip after sticking.
 - Reinforce the installation via more clips and tape.
- 3 The control box doesn't work. Re-plug in the USB port and try again.

- 4 Cannot connect to Bluetooth.
- Do not skip Bluetooth connection in the app.
 - Make sure Bluetooth in your mobile phone has been turned on.
 - It may be caused by incompatibility between the phone system and the app. Please change to another mobile phone and connect again.
 - Re-power on the strip and re-turn on Bluetooth in your phone to try again.
 - Keep the distance between the strip and the phone less than 1m/3.28ft while connecting.
 - Keep obstructions between the strip and the phone as few as possible.
- 5 The strip doesn't match the same color /Some lamp beads don't light up. Please contact Govee support team in time for return.

Customer Service

 Warranty: 12-Month Limited Warranty

 Support: Lifetime Technical Support

 Email: support@govee.com

 Official Website: www.govee.com

 @Govee  @govee_official  @govee.official

 @Goveeofficial  @Govee.smarthome



Govee Home App

For FAQs and more information,
please visit: WWW.GOVEE.COM