



User Manual

Model: H61E5
Govee COB Strip Light Pro

English	01
Deutsch	09
Français	18
Español	27
Italiano	35

Safety Instructions

Read and follow the safety instructions below:

- This device is for indoor use only.
- Avoid dropping the device from high places.
- Do not significantly modify the device.
- Do not leave children unattended with the device.
- Use the product with the provided power adapter only.
- When bending the strip light, try not to fix the clip too close and bend it too much, which may damage the light beads and affect its life span.

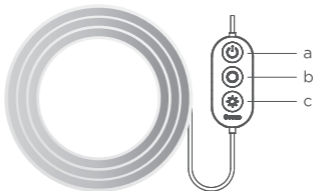
Introduction

Thanks for choosing Govee COB Strip Light Pro. This strip light uses the latest COB and silicone tube technology to create bright and colorful lighting without any distinguishable light spots. It supports RGBIC+W light technology, Matter, and smart voice control systems such as Alexa and Google Assistant, allowing you to control vibrant lighting effects right from your phone. This strip light is an excellent solution for upgrading your home lighting.

What You Get

COB Strip Light Pro	1
Power Adapter	1
User Manual	1

At a Glance



- a. Press to turn light on/off.
- b. Press to change colors. Button action can be customized in the app.
- c. Press to adjust brightness.

Installing Your Device

Before You Install

1. Unpack the box and check all items listed in the packing list.
2. Power on the strip light and check that it properly lights up.
Caution: When cutting, power off the strip light first, find the cutting position on the back of the strip, and cut. Once complete, power it back on and calibrate the new strip length in the app.



Installing Steps

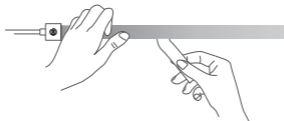
1. Wipe dust particles and debris from the wall surface with a clean cloth.



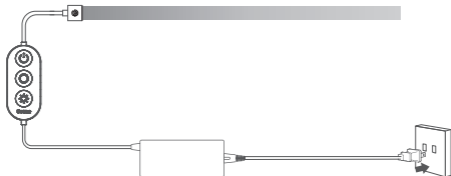
2. Estimate the positions of the control box and the power socket and make sure the strip light is long enough. Peel off the cover of the adhesive on the back of the control box and stick it to the wall surface. For a more convenient installation, please do not connect the control box with the adapter in this step.



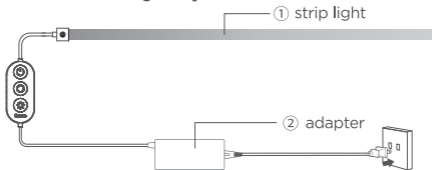
3. Peel off the cover of the adhesive on the back of the strip light. Stick the strip light onto the wall surface and press hard to make sure it is firmly mounted.



4. Connect the adapter to the control box and plug the adapter into the power socket.



Disassembly Tip



To more easily move or store this strip light, the light source (1) can be disconnected from the adapter (2). Additionally, the adapter and power plug cable can be disconnected from each other.

Pairing Your Light with Govee Home App

What You Need:

A Wi-Fi router supporting 2.4GHz and 802.11b/g/n bands. 5GHz is not supported.

Pairing Instructions

- 1 Download Govee Home App from the App Store (iOS) or Google Play (Android). Log in with your account. New users need to create an account.
- 2 Turn on your smartphone's Bluetooth.
- 3 Open the app, tap the "+" icon in the top right corner and search "H61E5".
- 4 Tap the device icon and follow the on-screen instructions to complete pairing.

Matter Guide

Cautions:

1. You will need to complete the network connection of apps that support Matter (e.g. Google Home/Apple HomeKit, etc.) within 15 minutes after the product is powered on when using Matter for the first time.
2. An IPv6 network is required.
3. Changing the network may cause Matter to malfunction.
4. If the product cannot connect to the app, first restore the product to factory settings by short pressing the middle button on the control box 4 times while pressing and holding down the power button. After restoring, try connecting again.

Step 1

Find the Matter QR code or device number on the product or on the “Device Settings” page in Govee Home App.

Step 2

Turn on Bluetooth on your smartphone.

Step 3

Download and open an app that supports Matter like Google Home, Apple HomeKit, etc.

Step 4

Use the device number or QR code located on the product or in the app to complete the network connection for the product for Matter.

Specifications

Model	H61E5
Adapter Input	AC 100-240V (US Plug) AC 200-240V (EU&BS Plug)
Light Input	24VDC 2A
Light Displaying Technology	RGBIC+W
Length	3m/9.8ft
Control Methods	Govee Home App, Voice Control

Troubleshooting

❶ Cannot connect to Govee Home App.

- a. Check if the device is powered on.
- b. Check if the smartphone's Bluetooth is enabled, or try connecting to another smartphone.
- c. When connecting for the first time, make sure the smartphone is near the device.
- d. If the connection error still exists, delete the connected device from the "Device" page on the app.
- e. Reconnect to Govee Home App by following the previously provided instructions.

- 2 The strip light does not work or is malfunctioning:**
- Check if the adapter used is the one provided.
 - Power the strip light off and then on. Make sure the adapter and the control box are powered on.
 - Long press and hold the power button on the control box and quickly press the middle button four times to restore to factory settings.
- 3 The strip light does not fully display the selected color, or some part isn't lighting up:**
- Please contact the Govee Support Team.

Customer Service

 Warranty: 36-Month Limited Warranty

 Support: Lifetime Technical Support

 Email: support@govee.com

 Official Website: www.govee.com

 @Govee  @goveeofficial  @govee.official

 @GoveeOfficial  @Govee.smarthome



Govee Home App

For FAQs and more information,
please visit: www.govee.com