



User Manual

Model: H7093

Govee Outdoor Spotlights 2

English	01
Deutsch	08
Français	15
Español	22
Italiano	29

IMPORTANT SAFETY INSTRUCTIONS

When using products, basic precautions should always be practiced including the following:

READ AND FOLLOW ALL SAFETY INSTRUCTIONS.

- The light source of this luminaire is not replaceable; when the light source reaches its end of life the whole luminaire shall be replaced.
- To reduce the risk of strangulation, the flexible wiring connected to this luminaire shall be effectively fixed to the wall if the wiring is within arm's reach.
- Do not connect the chain to the supply while it is in the packaging.
- Do not remove or insert lamps while the chain is connected to the supply.
- Do not interconnect parts of this lighting chain with parts of another manufacturer's lighting chain.
- CAUTION-The product is not a toy. Children and the disabled should use it under adult supervision.
- The Spotlights and Control box are rated as IP67.
- This product includes a built-in mic that can recognize sound information to synchronize lights and music.
- Tighten up the waterproof cap before installing the Spotlights.
- The internal light sources of the light bars and strip light cannot be replaced.If the light sources sustain damage, the product should be replaced.
- Do not allow children to assemble and install this product without adult supervision.
- Avoid installing this product near major heat sources.
- External dimmers cannot be used with this product.
- Use this product with the provided power adapter only.
- Caution - the power adapter should be placed indoors or connected into a socket with an IP67 protective enclosure.
- For ambiance lighting only. Not for illumination.
- **SAVE THESE INSTRUCTIONS**

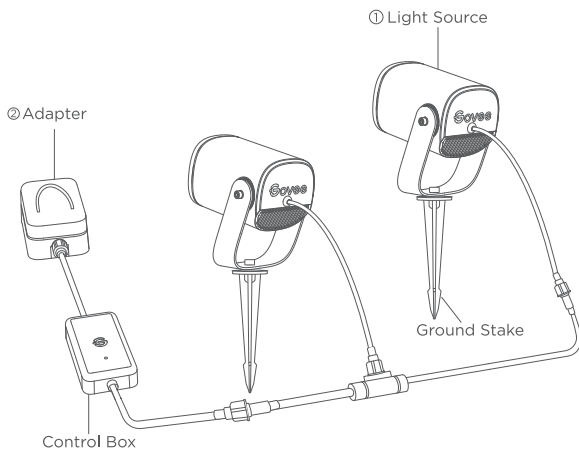
Introduction

Thanks for choosing Govee LED Spotlights. You can use Govee Home App to adjust light color, select modes, and set timers.

What You Get

Item	Quantity
LED Spotlights	2
Power Cable	1
Ground Stakes	2
User Manual	1
Service Card	1

At a Glance

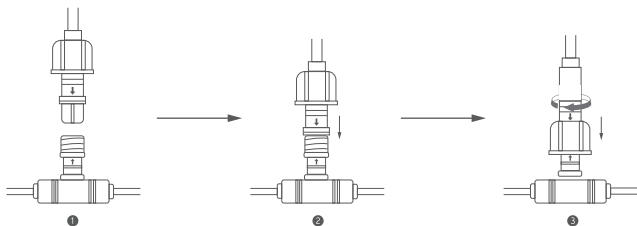


The product is divided into two parts: (1) a light source and (2) an adapter. By detaching the output terminal of the adapter, you can easily remove the light source or the adapter.

Installing Your Spotlights

Installing Your Spotlights on the ground

1. Attach the spotlights to the control cable and tighten the waterproof cable protectors.



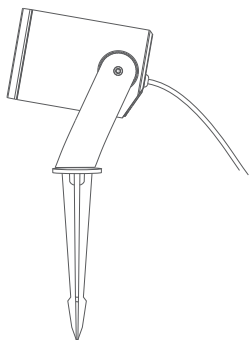
Note: To allow this device to function properly, all lights should be attached on the control cable.

2. Attach a ground stake to the stand of each LED Spotlight.

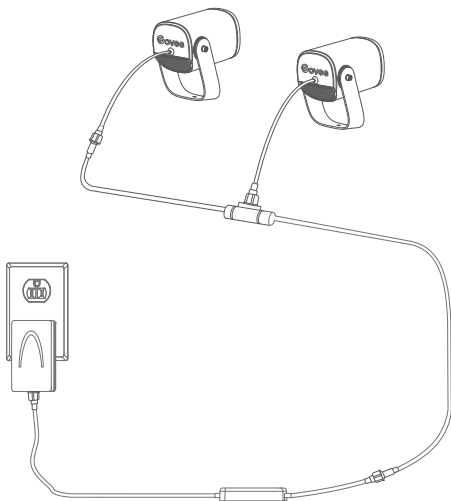


Note: If you plan to install this product on a very hard ground, please separately purchase expansion bolts or metal stakes.

3. Install each spotlight on the ground and adjust the angle of its beam.



4. Plug the power adaptor into power.



Pairing Your Device with Govee Home App

What You Need:

- A Wi-Fi router supporting the 2.4GHz and 802.11 b/g/n bands (5GHz is not supported)
- A smartphone or tablet running iOS(or above)or Android (or above).

Pairing Instructions

Download Govee Home App from App Store (IOS)or Google Play(Android). Enable your smartphone's Bluetooth. Open the app, tap the“+”icon in the top right corner and search for “H7093.”

Tap the device icon and follow the on-screen instructions to complete the pairing.



Specifications

Power Input (Adaptor)	200-240VAC 50/60Hz
Power Input (Spotlights)	24VDC 1A
Length	26ft/8m (including power cable)
Light Color	RGBW
Color Temperature	4000K
Waterproof	Control Box (IP67) Spotlights (IP67)
Working Temperature	-20° to 40°C (-4° to 104°F)

Troubleshooting

- Cannot connect to Govee Home App.
- Make sure the device is powered on.
- Make sure your smartphone's Bluetooth has been enabled.
- Make sure your smartphone is connected to a 2.4GHz WiFi network.
- Position your smartphone close to the control box, then try connecting again. One or more LED Spotlights fail to light up.
- Remove the light and then reattach it to the power cable. Also unplug the power adapter and then plug back into power.
- If the problem persists, please contact Govee Customer Service

Matter Guide

Cautions:

1. You need to complete the network connection of apps that support Matter (e.g. Google Home/Apple HomeKit etc.) within 15 minutes after the product is powered on when using Matter for the first time.
2. An IPv6 network is required.
3. Changing the network may cause Matter to malfunction.
4. If unable to connect successfully, please reset the network settings on the Wi-Fi setup page and try again.

Step 1

Find the QR code or device number of Matter on the product or on Device Settings page in Govee Home App.

Step 2

Turn on the Bluetooth on your smartphone.

Step 3

Download and open the app that supports Matter like Google Home/Apple HomeKit, etc.

Step 4

Use the device number or QR code on the product in the app to complete the network connection of Matter for the product.

Customer Service

 Warranty: 12-Month Limited Warranty

 Support: Lifetime Technical Support

 Email: support@govee.com

 Official Website: www.govee.com

 @GOVEE  @goveeofficial  @govee.official

 @GoveeOfficial  @GOVEE



Govee Home App

For FAQs and more information,
please visit: www.govee.com