

IMPORTANT SAFETY INSTRUCTIONS

IMPORTANT SAFETY INSTRUCTIONS

When using an electrical Appliance, basic precautions should always be followed, including the following:

READ ALL INSTRUCTIONS BEFORE USING THIS APPLIANCE SAVE THESE INSTRUCTIONS

1. This Appliance can be used by children aged from 8 years and above and persons with reduced physical, sensory, or mental capabilities or lack of experience and knowledge if they have been given supervision or instruction concerning use of the Appliance in a safe way and understand the hazards involved. Children shall not play with the Appliance. Cleaning and user maintenance shall not be made by children without supervision.
2. Clear the area to be cleaned. Remove power cords and small objects from the floor that could entangle the Appliance. Tuck rug fringe under the rug base, and lift items such as curtains and tablecloths off the floor.
3. If there is a drop off in the cleaning area due to a step or stairs, you should operate the Appliance to ensure that it can detect the step without falling over the edge. It may become necessary to place a physical barrier at the edge to keep the unit from falling. Make sure the physical barrier is not a trip hazard.
4. Only use as described in this manual. Only use attachments recommended or sold by the manufacturer.
5. For INDOOR household use ONLY. Do not use the Appliance in outdoor, commercial, or industrial environments.
6. Do not use without dust bin and/or filters in place.
7. Do not operate the Appliance in an area where there are lit candles or fragile objects.
8. Keep hair, loose clothing, fingers, and all parts of body away from any openings and moving parts.
9. Do not operate the Appliance in a room where an infant or child is sleeping.
10. Do not use and store in extremely hot or cold environments (below -5°C / 23°F or above 40°C / 104°F). Please charge the robot in temperature above 0°C / 32°F and below 40°C / 104°F .

11. Do not use Appliance on wet surfaces or surfaces with standing water.
12. Do not allow the Appliance to pick up large objects like stones, large pieces of paper, or any item that may clog the Appliance.
13. Do not use Appliance to pick up flammable or combustible materials such as gasoline, printer or copier toner, or use in areas where they may be present.
14. Do not use Appliance to pick up anything that is burning or smoking, such as cigarettes, matches, hot ashes, or anything that could cause a fire.
15. Do not put objects into the suction intake. Do not use if the suction intake is blocked. Keep the intake clear of dust, lint, hair, or anything that may reduce air flow.
16. If the power cord is damaged, it must be replaced by the manufacturer or its service agent in order to avoid a hazard.
17. Turn OFF the power switch before cleaning or maintaining the Appliance.
18. The lithium battery type suitable for CH2471 is Max. 8 cells, max. nominal voltage DC 14.4V, rated capacity 4,800mAh. The battery must be removed and discarded according to local laws and regulations before disposal of the Appliance.
19. Please dispose of used batteries according to local laws and regulations.
20. Do not incinerate the Appliance even if it is severely damaged. The batteries can explode in a fire.
21. The Appliance must be used in accordance with the directions in this Instruction Manual. Ecovacs Home Service Robotics cannot be held liable or responsible for any damages or injuries caused by improper use.
22. The robot contains batteries that are only replaceable by skilled persons. To replace the robot's battery, please contact Customer Service.
23. Please make sure your power supply source voltage matches the power voltage marked on the OMNI Station.
24. Use only the original rechargeable battery and OMNI Station provided with the Appliance from the manufacturer. Non-rechargeable batteries are prohibited.
25. Take care not to damage the power cord. Do not pull on or carry the Appliance or OMNI Station by the power cord, use the power cord

- as a handle, close a door on the power cord, or pull power cord around sharp edges or corners. Do not run Appliance over the power cord. Keep power cord away from hot surfaces.
26. Do not use the OMNI Station if it is damaged. The power supply is not to be repaired and not to be used any longer if it is damaged or defective.
 27. Do not use with a damaged power cord or receptacle. Do not use the Appliance or OMNI Station if it is not working properly, has been dropped, damaged, left outdoors, or come in contact with water. It must be repaired by the manufacturer or its service agent in order to avoid hazards.
 28. The plug must be removed from the receptacle before cleaning or maintaining the OMNI Station.
 29. Remove the Appliance from the OMNI Station, and turn OFF the power switch to the Appliance before removing the battery for disposal of the Appliance.
 30. When not using the OMNI Station for a long period of time, please unplug it.
 31. If the robot will not be used for a long time,

power OFF the robot for storage and unplug the OMNI Station.

32. **WARNING**-Add clean water into the clean tank only.
33. **WARNING:** For the purposes of recharging the battery, only use the detachable supply unit CH2471 provided with the Appliance.








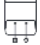

To satisfy RF exposure requirements, a separation distance of 20 cm or more should be maintained between this device and persons during device operation.

To ensure compliance, operations at closer than this distance is not recommended. The antenna used for this transmitter must not be co-located in conjunction with any other antenna or transmitter.

Device Update

Typically, some devices are updated bi-monthly, but not always so specific.

Some devices, especially those that went on sale more than three years ago, will only be updated if a critical vulnerability is found and fixed.

	Caution: hot surface
	Short-circuit-proof safety isolating transformer
	Switch mode power supply
	For indoor use only
	Direct current
	Alternating current
	Before charging, read the instructions.
	Polarity of the charging port
	Time-lag miniature fuse-link

The remote surveillance is for the absolute private use of non-public, private owned places for the pure self-protection and single control intended only. Please be aware of the local data protection based legal obligations in case of use. No surveillance of public places, especially with clandestine intent and/or on the part of the employer without justified reasons. Such not justified use is in the risk and responsibility of the user only.

European Union Compliance Statement Information on Disposal for Users of Waste Electrical & Electronic Equipment



This symbol on the product or on its packaging indicates that used electrical and electronic products should not be mixed with unsorted municipal waste. For proper treatment, it is your responsibility to dispose of your waste equipment by arranging to return it to designated collection points.

Disposing of this product correctly will help save valuable resources and prevent any potential negative effects on human health and the environment, which could otherwise arise from inappropriate waste handling.

To return your used device, please use the return and collection systems or contact the retailer where the product was purchased, which is free of charge, please contact your local authority for further details of your nearest designated collection point.

Penalties may be applicable for incorrect disposal of this waste, in accordance with your national legislation.

Information on Disposal for Users of used batteries



This symbol means that batteries and accumulators, at their end-of-life, should not be mixed with unsorted municipal waste. Your participation is an important part of the effort to minimize the impact of batteries and accumulators on the environment and on human health. For proper recycling you can return this product or the batteries or accumulators it contains to your supplier or to a designated collection point, which is free of charge.

Disposing of this product correctly will help save valuable resources and prevent any potential negative effects on human health and the environment, which could otherwise arise from inappropriate waste handling.

Penalties may be applicable for incorrect disposal of this waste, in accordance with your national legislation. there are separate collection systems for used batteries and accumulators.

Please, dispose of batteries and accumulators correctly at your local community waste collection/recycling center.

Restriction of the use of certain hazardous substances (RoHS) Directive

Ecovacs Home Service Robotics Co., Ltd. hereby declares the whole product including parts (cables, cords, and so on) meets the requirements of RoHS Directive 2011/65/EU and amendment Commission Delegated Directive (EU) 2015/863 on the restriction of the use of certain hazardous substances in electrical and electronic equipment ("RoHS recast" or "RoHS 2.0").

Radio Equipment Directive

Ecovacs Home Service Robotics Co., Ltd. hereby declares that the product listed in this section comply with the essential requirements and other relevant provisions of the Radio Equipment Directive 2014/53/EU.

Europe Authorised Representative:



ECOVACS Europe GmbH
Holzstrasse 2 | D-40221 Düsseldorf | Germany

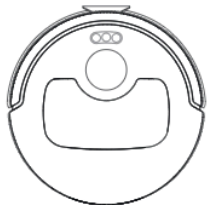
Ecovacs Home Service Robotics Co., Ltd. hereby declares that the product comply with the essential requirements and other relevant provisions of the RoHS Directive 2011/65/EU and amendment Commission Delegated Directive (EU) 2015/863, the Radio Equipment Directive 2014/53/EU.

The declaration of conformity can be viewed at the following address:

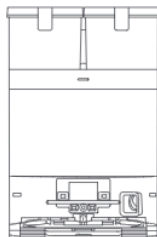
<https://www.ecovacs.com/global/compliance>.

PACKAGE COMPONENTS

1 PACKAGE CONTENTS



Robot



OMNI Station



Base



Power Cord



Side Brush



Instruction Manual

* Figures in this manual are for reference only and may differ from the appliance. Product design and specifications are subject to changes without notice.

2 PRODUCT DIAGRAM

Robot

Navigation Module

Obstacle Avoidance Module

Top Cover

Buttons on the robot

Bumper

Buttons



Press: Exit/Return to the station
Robot not in the station

Press and hold: Self-Cleaning



Press: Toggle Start/Pause/Continue
Press and hold: Power on/Power off



Press: Start/End spot cleaning
Press and hold: Activate/Deactivate the child lock

Inside the Robot (Under the Top Cover)

RESET Button

Network Setup: Press the RESET button, and you will hear a voice prompt to connect the robot with the APP.

Restore Default Settings: Press the RESET button and hold for 5 s. After you hear the voice prompt, the startup music will play, and the robot will be restored to the default settings.

Wi-Fi Status Indicator/
RESET Button

Charging Contacts

Water Filling Port

Edge Sensor

Bottom Back View

Anti-drop Sensors

Carpet Detection Sensor

Roller Brush

Mounting Slots for Mopping Pad Assembly

Universal Wheel

Side Brush

Brush Release Button

Driving Wheels

Dust Bin

Filter

Dust Disposal Port

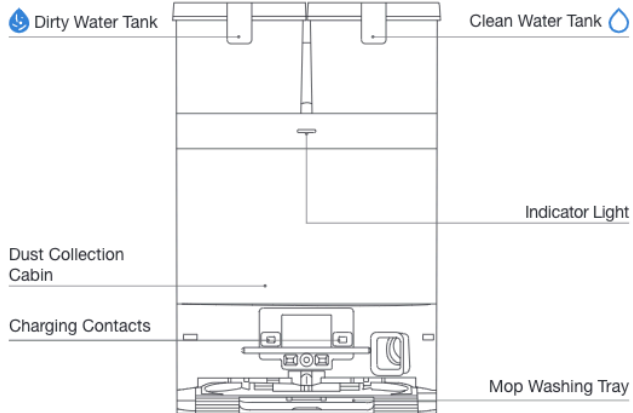
Release Button

Mopping Pad Assembly

Mopping Pad Plates

Washable Mopping Pads

OMNI Station

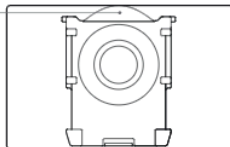


Note:

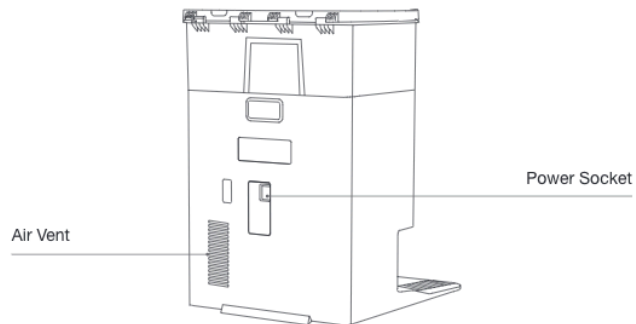
- Flashing Red: Please check the ECOVACS HOME App for the reason.
- If the robot fails to charge, please wipe charging contacts with a clean and dry cloth.

Dust Bag

Dust Bag Handle



OMNI Station (Back)



3 Indicator Light

	Light Effect	State
Robot	Breathing White	Charging
	Solid White	Fully Charged/Running
	White Light Flashes 3 Times	Power Button Triggered, Task Starts/Pauses/Continues
	Solid Red	Low Battery
	Flashing Red	Alarm
Station	Solid White	Standby/Running
	Flashing Red	Malfunction
	Goes Out	Power Outage/ Deep Sleep Mode

4 Sensors Overview

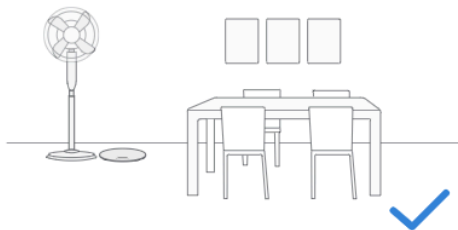
Name	Functional Description
Navigation Module	Laser Ranging is applied to measure the distance between the robot and surrounding objects based on the time difference of reflection, allowing the module to map against the objects around while the robot is moving. The detection range is 8 m.
Obstacle Avoidance Module	Laser Ranging and triangulation are used to measure the distance between the robot and surrounding obstacles. The sensor emits laser beams and receives the reflected light from obstacles ahead. When an obstacle is detected within close range, the robot automatically turns to avoid it. The detection range is 0.3 meters.
Anti-drop Sensors	With Infrared Ranging, the distance between the robot's bottom and the ground is detected by the infrared sensors at the bottom. The robot will not move forward when there are stairs in front (such as when the height of the white surface is 55 mm or more, or the height of the black surface is 30 mm or more) and the identified exceeds the preset one, enabling the Anti-drop function.
Carpet Detection Sensor	The sensor emits 300 kHz ultrasound, which energy will be absorbed by the carpet, causing the echoed energy to be lower than the threshold. The robot thereby detects the carpet's presence. In the ECOVACS laboratory, more than 50 types of carpets available on the market are identified.
Anti-collision Sensor	With the principle of the Optocoupler Switch, the robot will avoid obstacles when they are about to collide.
Edge Sensor	With Infrared Ranging, the edge sensor detects the distance between the robot and objects on the side. When there is a wall or obstacles on the right, the robot performs edge cleaning to avoid missing any spots and prevent collisions.

INITIAL SETUP AND USE

1 Notes Before Cleaning

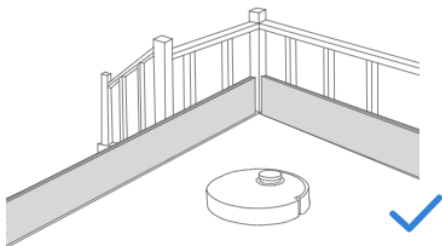
Tidy up the Area to be Cleaned

For the maximum cleaning area possible, before using the robot, please put furniture, such as tables, chairs, and pedestal fans, in their proper place and put away low-lying items, such as weight scales.



Prevent robot from Falling

Place a physical barrier at the edge of a drop, such as staircases and steps, to stop the robot from falling over the edge.



Open Doors and Help robot Explore

Open all room doors to help the robot fully explore your house during the first cleaning.



To improve cleaning efficiency, please remove objects, including cables, clothes, and slippers, from the floor.



Before using the product on a carpet with tasseled edges, please fold the tassels under the carpet.



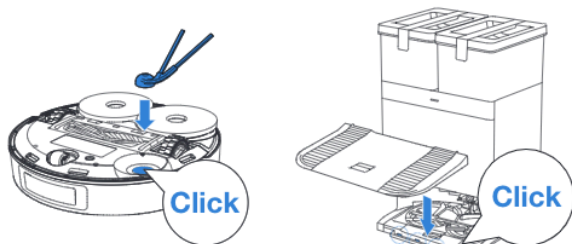
Please do not stand in narrow spaces, such as hallways, to avoid blocking TrueMapping.

2 Quick Start

Remove all protective materials before using.

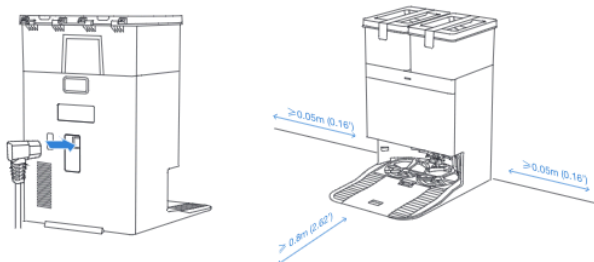
1. Installation

The sound of “click” indicates proper installation.



2. Assemble and Place the Station

Place the OMNI Station against the wall on a flat, hard surface. Do not place items within 0.05 meters on either side and 0.8 meters in front.

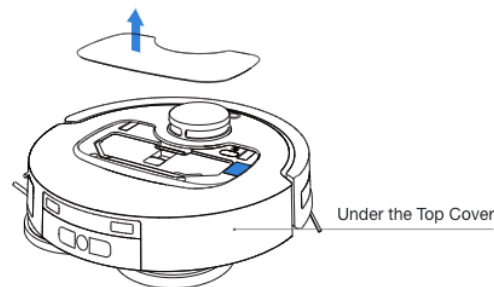


- If there are reflective objects such as mirrors and reflective skirting lines near the Station, the bottom 14 cm of such objects should be covered.
- Do not place the Station under direct sunlight.
- Place the station in a location with a strong Wi-Fi signal for better user experience.
- Do not use the appliance on wet surfaces or surfaces with standing water.
- Do not wipe the robot and the station with a damp cloth or use any liquid.

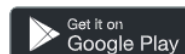
3 Download the ECOVACS HOME APP

To enjoy all available features, it is recommended that you control your robot via the ECOVACS HOME App.

1. Scan the QR Code under the Top Cover to download the App.



2. Search "ECOVACS HOME" on the App Store or Google Play to download the App.



Note: Follow the instructions on the App to complete the registration, login, and connection.

4 Power on Robot

1. Turn on the power switch and place the robot in front of the station that is connected to power supply.



5 Connect robot with APP


Name	Description
Charging Interface	The infrared interface is turned off by default, and it is activated when the robot is in the station. Provides power to the station, and the main unit can connect with the charging contacts on the station for charging.
Wi-Fi*	Facilitates data transfer between the app and the robot, enabling control of the robot through the App.
ECOVACS HOME App	ECOVACS products offer smart functions such as network setup, mapping, and cleaning mode selection (specific to each product). To utilize these features, users need to download and use the official ECOVACS Home App.

• The robot series robotic vacuums are designed for domestic cleaning scenarios. A home Wi-Fi network is required for operation, and anti-DDoS protection can be configured by users through route settings.

Wi-Fi Network Requirements:


- You are using a 2.4 GHz or 2.4/5 GHz mixed network.
- Your router supports 802.11b/g/n and IPv4 protocol.
- Do not use a VPN (Virtual Private Network) or Proxy Server.
- Do not use a hidden network.
- WPA and WPA2 use TKIP, PSK, and AES/CCMP encryption.
- WEP EAP (Enterprise Authentication Protocol) is not supported.
- Use Wi-Fi channels 1-11 in North America and 1-13 outside North America (refer to local regulatory agency).
- If you use a network extender/repeater, the network name (SSID) and password are the same as your primary network.
- Please enable WPA2 on your router.

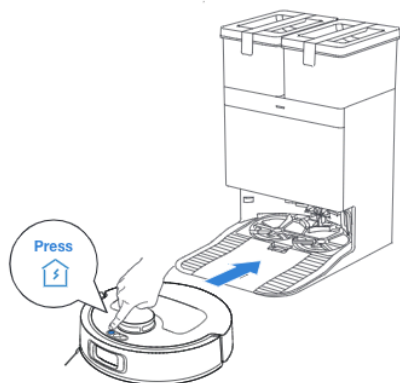
Wi-Fi Indicator Light

	Slow flashing white light	Disconnected from Wi-Fi
	Fast flashing white light	Connecting
	Steady white light	Connected to Wi-Fi

Please be aware that intelligent features such as remote startup, voice interaction, 2D/3D map display and control settings, and personalized cleaning (depending on the Appliance) require the ECOVACS HOME App, which is constantly updated. You need to agree to our Privacy Policy and User Agreement so that we can process some of your essential and necessary information before you can use certain features of the ECOVACS HOME App to control the Appliance. If you disagree with our Privacy Policy and User Agreement, such features will be unavailable. However, you can still use the basic features of this Appliance for manual operation.

6 Power on and Charge the robot

Use the ECOVACS HOME App to recall the robot, or press  on the robot to allow it to dock for charging.

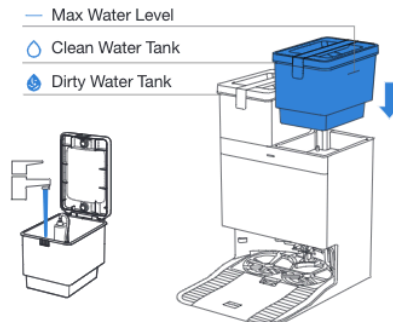


Note:

- When the robot is not in use, keep it powered on and charging.
- It is recommended to start cleaning from the station. Do not move the station while cleaning.

7 Fill the Clean Water Tank

Take out the clean water tank, open the tank cover, and fill the tank with water up to the maximum water level. Close the tank cover and re-install the clean water tank.

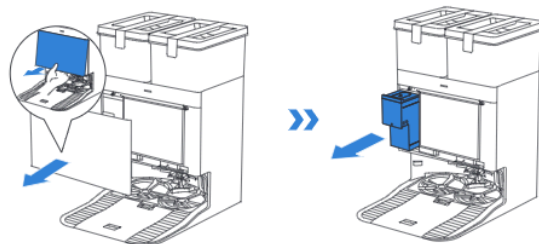


Note:

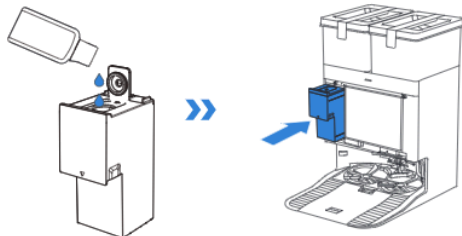
- Use a clean, dry cloth to wipe off any water on the surface of the tank before placing it in position.
- Make sure to lock the top covers of both water tanks securely before use.
- Any water marks in the water tanks are from function testing. Please use it with confidence.

8 Add Cleaning Solution (sold separately)

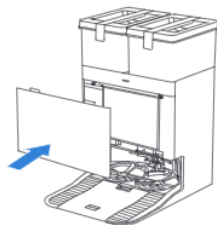
1. Take off the dust collection cabin cover, pull out the cleaning solution unit, and place it on a level, hard surface.



2. Unlid the cleaning solution unit and fill it with ECOVACS cleaning solution (sold separately). Put the lid on and the unit back to the station.



3. Place the fit joints at the upper edge of the dust collection cabin cover and press the lower part of it to install it properly.



Note:

- Cleaning solution is pumped automatically from the cleaning solution unit. Do not add cleaning solution to the water tanks.
- For better performance and longer lifespan of the product, please use ECOVACS DEEBOT cleaning solution (sold separately).
- Please make sure that no foreign objects fall into the cleaning solution unit.

9 Operate the robot

1. Start Mapping


When creating a map for the first time, please follow the robot to help resolve some minor issues.

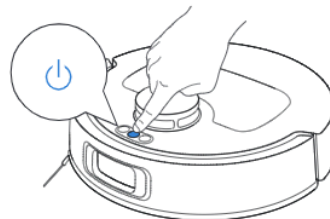
For example, the robot may get stuck under furniture. Please refer to the following solutions:

- ① Raise the low-sitting furniture if possible;
- ② Cover the bottom of the furniture;
- ③ Set up a virtual boundary via the App.

2. Start Cleaning

- The robot's water tank is automatically refilled through the station. Manual refilling is not needed.
- When mopping, the robot will recognize floor types and is able to lift mops automatically when encountering carpets. Please do not use the robot on shaggy rugs or carpets with fibres longer than 9 mm. It is recommended to fold up the shaggy rugs with fibres longer than 9 mm during the cleaning process, or set the shaggy carpeted area as a no-entry zone by setting virtual boundary in the ECOVACS HOME App.


Please ensure that the robot is in the station and is fully charged before cleaning for the first time. Tap  on the robot to start. You can also use the ECOVACS HOME App to start.




Note:

- Do not frequently remove washable mopping pads.
- Do not scratch the mopping pad plates with a rag or other objects.
- Replace the mopping pads in time as prompted by the App. Explore more accessories in the ECOVACS HOME App or at <https://www.ecovacs.com>.


3. Pause

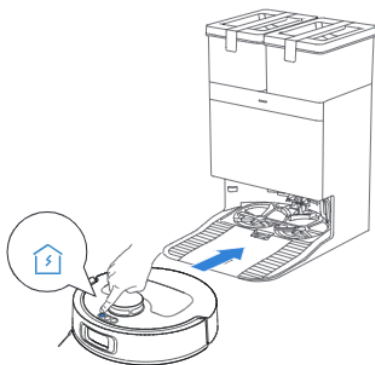
Tap  on the robot to pause it while it is working. You can also use the ECOVACS HOME App to pause the robot.

4. Wake up

After pausing for a while, all indicator lights on the robot will go out. To wake up the robot, press .

5. Back to Station

Use the ECOVACS HOME App to recall the robot, or press the  button on the robot to allow the robot to dock for charging.



6. Deep Sleep Mode

The robot will enter deep sleep mode if it stays outside the station for about 10 h to protect the battery. Please switch OFF and ON to wake the robot up.



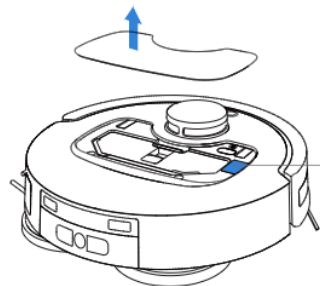
TECHNICAL SPECIFICATIONS

Model	DLX71		
Rated Input	20V === 2A	Charging Time	about 4.5h
Station Model	CH2471		
Rated Input	220-240V ~ 50-60Hz	Rated Output	20V === 2A
Rated Input Current(Charging)	0.5A	Power(Emptying)	650W
Power(Hot Water Washing Mop)	1650W		
Frequency Bands	2400-2483.5 MHz		
Networked Standby Power	Less than 2.00W		

Output power of the wireless module is less than 100mW.

Note: Technical and design specifications may be changed for continuous product improvement.

Explore more accessories at <https://www.ecovacs.com>.



Please use the mobile camera to scan the QR code and obtain the user guide.